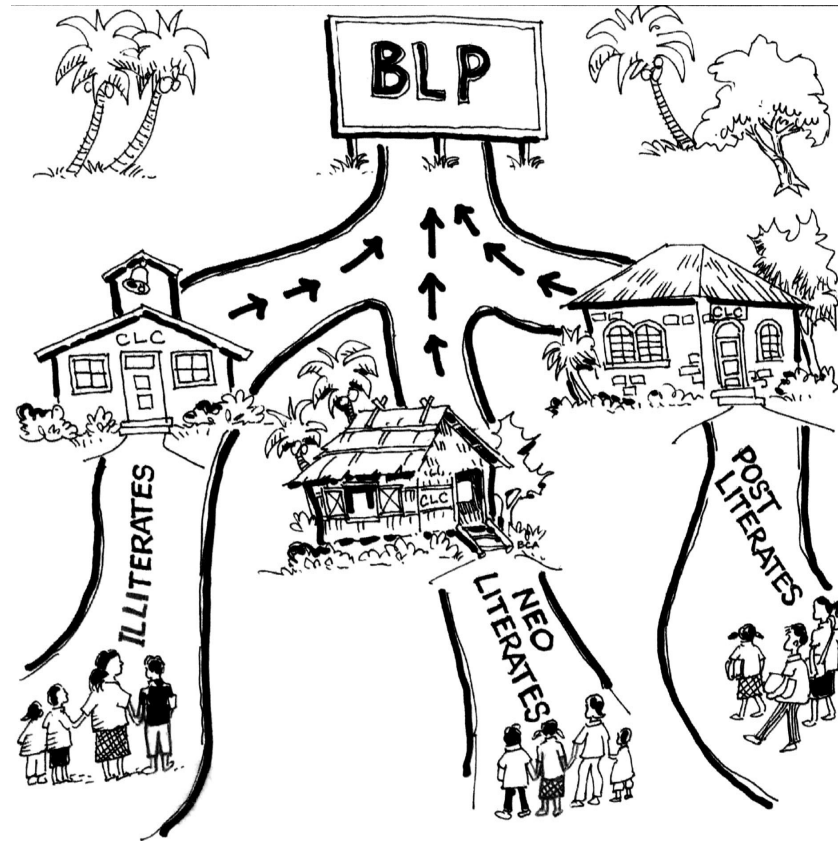


Ninga Pated Megdunut Ita

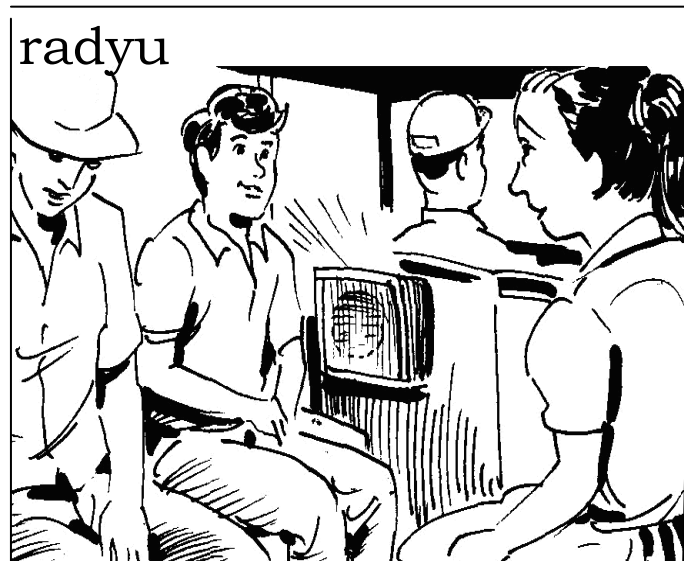
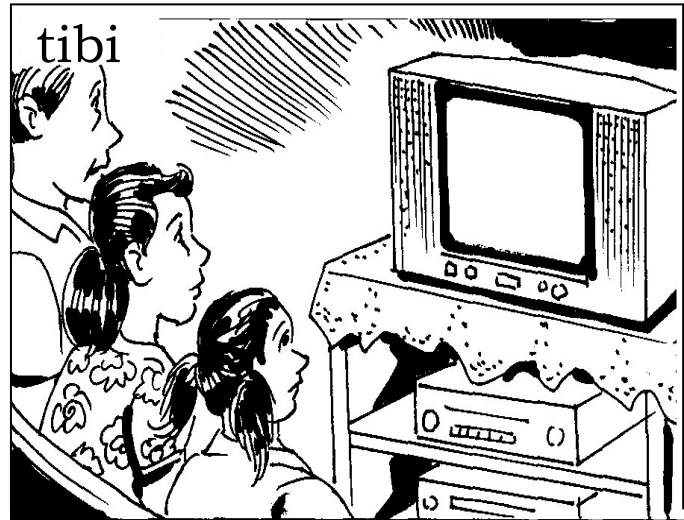


B a s i c L i t e r a c y L e a r n i n g M a t e r i a l
Bureau of Alternative Learning System
DEPARTMENT OF EDUCATION



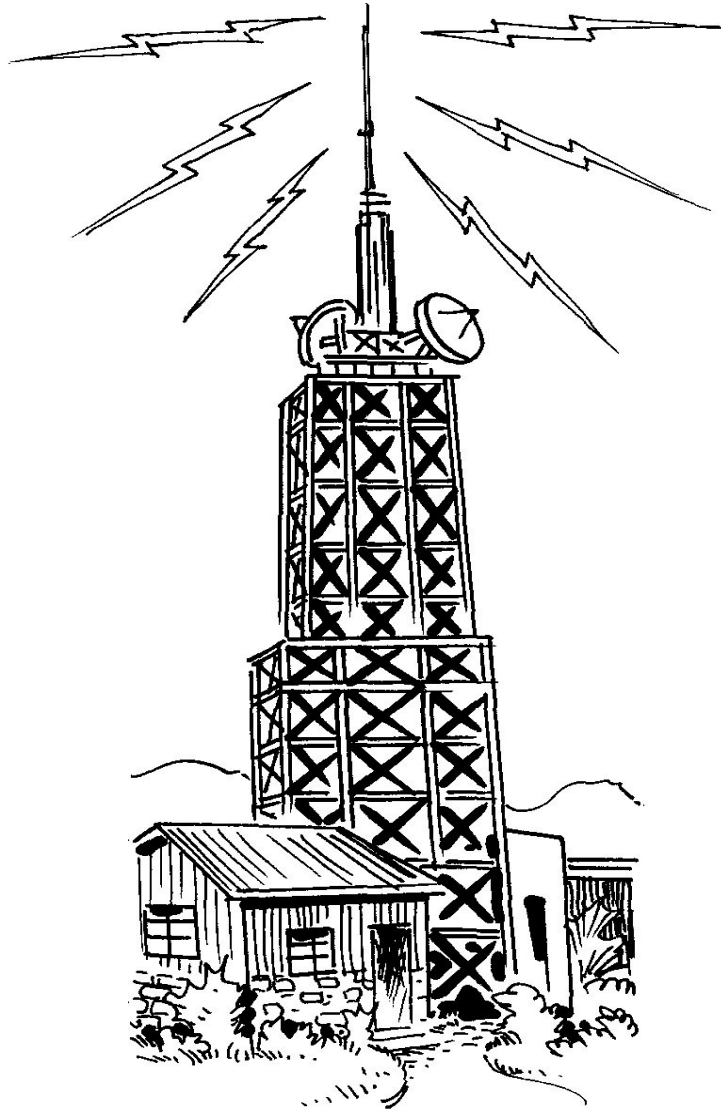
Ninga Pated Megdunut Ita

Pektu'unan ta









Pektima'anan ta

Mikpuun sug dalag balita' mesuunan ta buat diag:

*Radyu

*Tibi

*Balita'

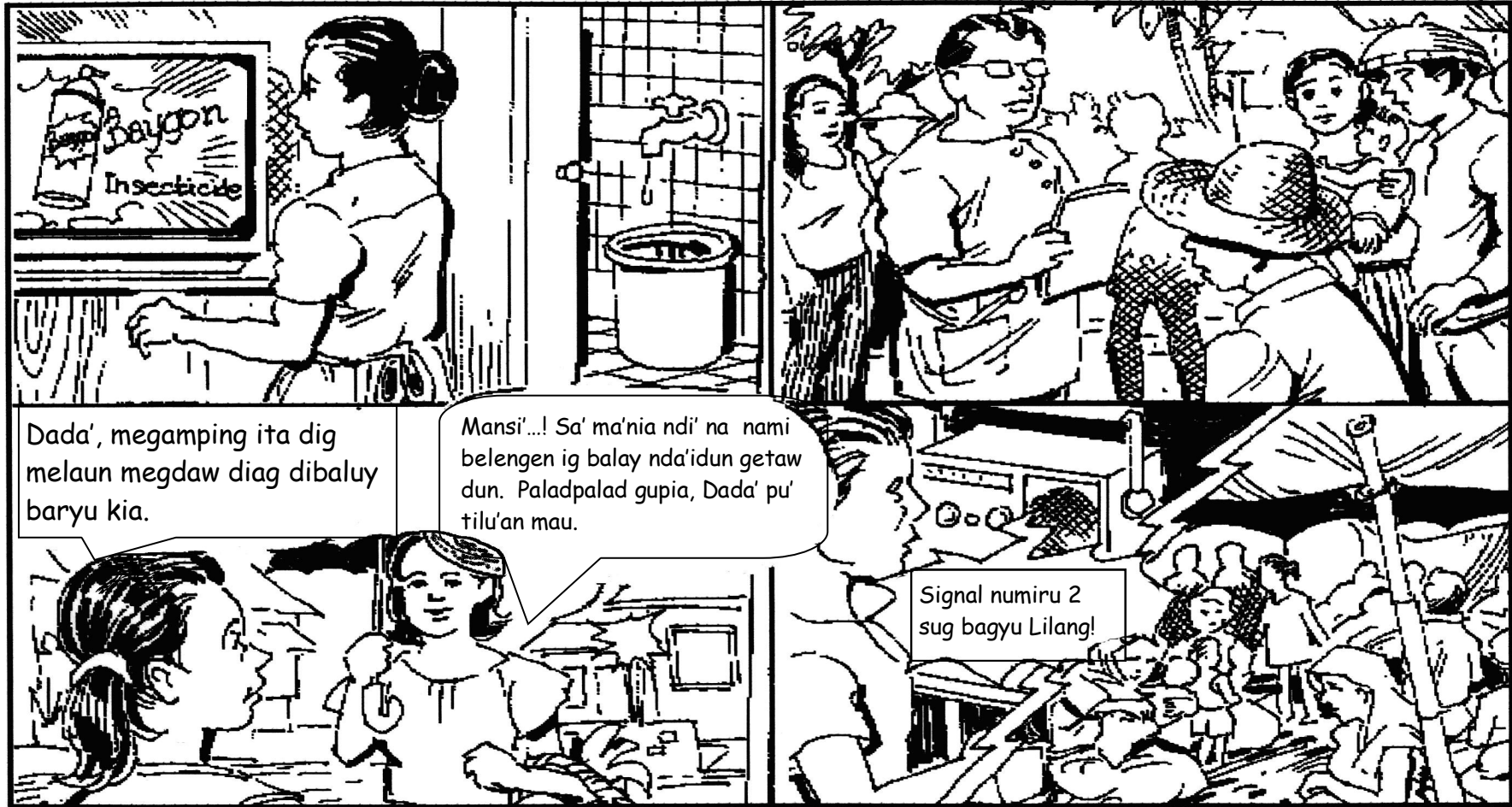
*Sama etaw

*Bu' sug gembegu tiknuluhiya ma' nug kumpyutir,
tilipunu bu' silpun.

Sug dalag radyu, tibi balita', sama etaw bu' sug dalag gim-
purmasyun gimpurtanti gupia pu' megbegay ini nug melengas
kesuunan nug dalag getaw adun melikayan sug disgrasya, bagyu
bu' kuyaw.

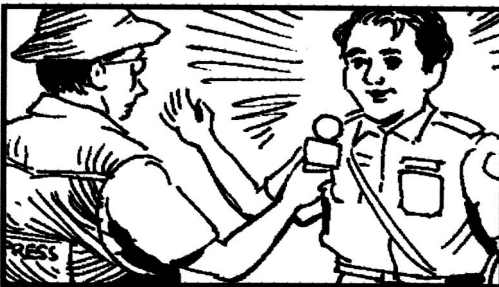
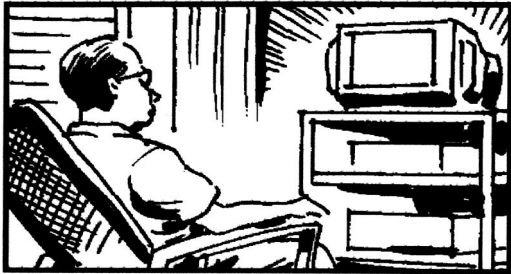
Pegebitebitan ta

Mauma gimpurtanti gimpurmasyon?



Misuunan mu ba?

Pemili' niu sug dalag gelal diag kahun buat ditug duunig deduing dun.

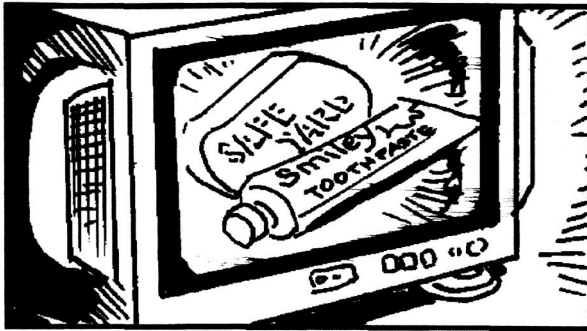


Gintirbyu dig radyu

Migbantay lemet

Mekineg dig radyu

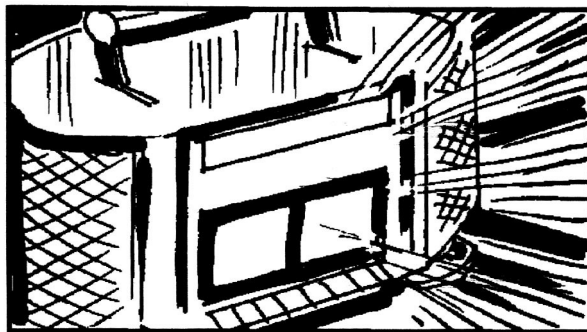
Megbantay dig tib



Gintirbyu dig tibi



Pehinumdum nug tibi



Miglemet ditug buid

Pehinumdum nugn tibi

Besaan mu

Pipitu: Maribil, midengeg mu ba sug balita' diag radyu? Gebii din, in da gihapun ig balita' diag tibi.

Maribil: Nda' u ma lai mesuunay...!

Pipitu: Nda' mu mansi' mesuunay pu' miksitaas na gupia sug laga' nug gasulina? Samet naita meglised iini.

Maribil: Aaah iin mansi' sug ditu pau Manila' sug dalag getaw ditu iin da gusay pigebitan nilan bu' sug duma migrali pa dig dalan.

Pipitu: Iin gyud bisan dini benwa ta iin da gusay pigebitan.

Maribil: Iin baya' minuli'u dini pu' gubut gupia ditug Manila'.

Pipitu: Melengas pu' midelemdem mu, dini nita linaw da. Meminaw na laak ita dig dalag hitabu' dini benwa ta.

Maribil: Mekelatelat ita gupia pu' meksamit ita meglised ig dalag Pilipinu.

Pipitu: Gelaatan ta na laak sa' andun nig sunud mehitabu'.

Maribil: Iin gyud! Buat dinita sug peguswag ta.

Pipitu: Ndi' na laak ita mektalu' talu'. Meminaw na laak ita.

Maribil: Melengas sia sa' mepalin na sug pegleketubu' ta. Naa, sa' ma'nia megdayun pau, mendadi sa' melengas ig pegita' ta puli.

Pipitu: palad-palad dema...

Sulayay mu

A. Megbaal talu' buat diag tinalu' diag dialem kia.

Peninggi': pegbantay

Sembag: bantay, gatay, natay

1. pehinumdum - _____, _____, _____
2. peminaw - _____, _____, _____
3. gintirbyu - _____, _____, _____
4. gimpurtanti - _____, _____, _____
5. mitalu' - _____, _____, _____

B. Meksulat nug dalag pentelu'en. Gemiten sug dalag mibaal talu' ditug grupu A.

Penenggi': Andun ig ngalan mu?

1. _____
2. _____
3. _____
4. _____
5. _____
6. _____
7. _____
8. _____

C. Sug meksenlangan minaluy ilan nug dalag penggemiten dig balay nilan ditug mirkadu.

Sulat niu sug laga' nug tiba'an misaluy nilan.kwinta niu sug launan migastu nilan,peduma niu sug pasahi nilan.

3 kilu begas (P25.00 kilunen) _____

2 kilu seda' (P100.00 kilunen) _____

2 pempung mentaak (P20 sepempung) _____

1 mika' butilya nug kapi (P50.00 salag butilya) _____

2 kilu gemputi' kelamay (P30.00 kilunen) _____

3 buuk gembagel lata nug gatas (P350.00 salag lata) _____

1 litru gaas (P37.00 salag litru) _____

pasahi (P60.00 pangay bu' puli') _____

Launan migastu _____